



ZOOMLION

Contacts



ZOOMLION

Vision Creates Future

Contents

Zoomlion Mobile Crane Branch Company	01-02
Exemplar of Truck Crane—V _r -series Cranes, powerful, solid and profitable	03-06
QY70V532 Main Technical Parameters	07
QY70V532 Lifting Height Curve	08
QY70V532 Table of Rated Lifting Capacity	09-16

ZOOMLION



As one of the most important business divisions of Zoomlion, the Mobile Crane Branch Company was established in 2003 via Zoomlion's mergers & acquisitions (M & A) of Hunan PuYuan (Holdings) Co., Ltd., which is the predecessor of the Branch Company and which has enjoyed a high reputation in its technology, brand and management both in and out of the construction machinery industry. The Branch Company combines research, development, manufacturing and test as a whole and covers three Industrial Parks-QuanTang Industrial Park, GuanXi Industrial Park and LuGu Industrial Park in a total production area of more than 660,000 m². Its annual turnover is nearly 20 billion Chinese Yuan, providing four types of cranes, i.e. 12 tons to 220 tons truck cranes, 180 tons to 1000 tons all terrain cranes, 50 tons to 3200 tons crawler cranes and 35 tons 100 tons rough terrain cranes. Its products have been widely used in infrastructure construction, municipal construction, rail transit construction, petrochemical industry, logistics area, thermal power station, nuclear power plant and wind power plant constructions.

As a company with 40-year history in researching, developing and manufacturing mobile cranes, it has witnessed the development of China mobile crane industry, and participated in it honorably. Zoomlion is the first company that has the ability to research, develop and manufacture both the crane superstructure and chassis. And it is also the first company to import and assimilate the all terrain crane technologies from Europe. Furthermore, it is the pioneer company to manufacture the largest-tonnage truck cranes and crawler cranes in China. Zoomlion has become one of the leaders in large-tonnage mobile crane industry of China with its high product intelligence, core technologies and good appearance.

The Branch Company has implemented Lean Production (LP), which adopts a manufacturing process in which the assembly of the chassis, slewing table & complete vehicle and the painting of the complete vehicle are carried out in a sequential manner on the assembly lines to create a finished product. Advanced technological equipment from Germany, Sweden, America and Japan, high-efficient & professional staff and the strict standardization process control have guaranteed excellent products.

Insistently adhering to the "Customer-orientated" core marketing concept, the Branch Company has set up an independent and perfect sales network and has taken the lead in building the "four in one" channel marketing mode in China. It has set up marketing service agencies all over the main medium and big cities in China. It has also advocated and devoted to the Product Life Cycle Services. At the same time, it has established and make innovations on the new service standards, thus to persistently upgrade and enrich values of customers. Via opening up new markets in the global perspective, products of the Branch Company have been sold to many regions, e.g. North America, Europe, Australia, Central Asia, West Asia, Southeast Asia, Central America, South America and Africa, etc. all over the world till now.

Obedience to the core concept of "Fully Actualized Sincerity Far-reaching and Long-lasting", the Mobile Crane Branch Company determines to become the first-class mobile crane manufacturer in the world with its unceasing innovation and persistent pursuit of excellence.

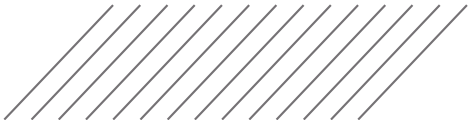
ZOOMLION



- The technical data - lifting height, working speeds and lifting capacities etc. – are in the internationally advanced levels;
 - The static load stability test with a safety factor of 133% ensures superior reliability;
 - 5-section telescopic boom made of low-alloy high-strength steel; Upgraded U-type profile of particular torsional rigidity and for the highest capacity; Sidewise bending and deflection under the average levels in class;
 - Optimized structural design of the complete vehicle: low boom deadweight, increased counterweight weight, reasonable mass distribution and even local stress distribution, providing superior lifting capacities for intermediate and long boom variants in class;
 - Imported Sweden bending machine and unique boom head-tail butt molding, making the boom manufacturing in higher precision;
 - Inlaid lower sliding block for increased contact area;
 - Patented telescoping technology of the telescopes; The telescopes can be telescoped out or in as you like, thus providing you with more and flexible working condition choices and improving the lifting stability.
 - Front-mounted luffing gear, one hydraulic cylinder with a safety balance valve provides the boom with smooth luffing movements from -2° to 80°.
 - H-type outrigger with excellent cross sectional performance and super bearing capacities, ensuring superior stability;
 - Fully or intermediately extendable sliding beams facilitate operation even in narrow areas;
 - Advanced outrigger levers can control the outriggers independently or simultaneously from both sides of the chassis;
 - The exclusive horizontal cylinder overload protection technology can effectively prevent damages to cylinders in the telescoping process;
 - The winch reducer is fitted with a specially designed double broken-line rope groove, which can ensure perfect rope arrangement, thus providing prolonged rope service life and reduced operating costs;
 - Optimized and improved PTO control type, ensuring safer and more reliable operation;
 - In-house manufactured 4-axle special purpose chassis is equipped with the special purpose engine for construction machinery which is jointly developed by Zoomlion and Weichai Power, offering big torque at low speed and low oil consumption at high speed;
 - Steering gear with limit unloading technology can automatically realize pressure relief function when the steering wheel is in the limit position, thus to prevent elements e.g. steering pump, etc. from damage, and to ensure much more flexible and reliable steering operation;
 - Spacious cabs made of steel, ergonomically arranged operating and control instruments, special air conditioning.
-
- The new-type slewing table in convincing design is of reasonable stress distribution and beautiful appearance. Its structural strength and rigidity are higher than other cranes in class;
 - Exclusive test bench in class with clearance adjustment can adjust the big and small gear rings accurately, thus ensures stable slewing movement;
 - Original 4-point ball-type slewing bearing provides super bearing capacity and prolonged service life; Slewing cushion valve and normally closed brake ensure smooth and reliable slewing movement;
 - Exclusive slewing bypass shut-off control type brings optimal micro-positioning performance for slewing motion;
 - Controllable free swing function ensures that the load slides to required position automatically during lifting process;
 - Control oil source with stabilized pressure, making the hydraulic system work stably and reliably;
 - The new-generation pilot-operated joysticks and hydraulic proportional control system with anti-pollution cutting sleeve connector applied, ensuring maximized reliability and offering convenient operation;
 - New-generation hydraulic elements with high precision and accuracy;
 - The main key power elements, drive parts, hydraulic elements and structural materials are from the world first-class manufacturer; Unique integrated power control box ensures the electrical system reliable but to be maintained conveniently; The emergency off button (Red) can be activated in an emergency to cut off the power supply to ensure safety;
 - System voltage can be stabilized by the surge absorber, thus to effectively protect the electrical elements;
 - The new-generation load moment limiter is equipped with comprehensively upgraded hardware and software for higher accuracy and reliability;
 - Imported connectors and waterproof terminal bolts are in excellent waterproof and heat-resistant performances and high reliability;
 - Field-proven components, high universality and easy procurement;
 - Multiple safety devices, e.g. boom angle indicator, hoisting / lowering limit switch, hook latch, “the 5th outrigger pressure too high” warning device, bidirectional hydraulic lock, balance valves, relief valves and GPS, etc. can provide the operator and the equipment with 360°all-round protection.



ZOOMLION



Comparison Table of Key Technical Parameters between Zoomlion QY70V532 and Similar Products in the Industry

Parameters compared		Zoomlion QY70V532	Similar products in the industry	Comparison conclusion
Boom cross section size (mm)		894×676	853×670	The lifting boom of the Zoomlion QY70V offers a larger cross section and stronger rigidity.
Boom derricking up time (s)		57	60	The luffing speed of the Zoomlion QY70V is faster than the industry standard.
Boom extending time (s)		107	150	The telescoping speed of Zoomlion QY70V's boom is faster than the industry standard.
Boom telescoping method		Free telescoping+ Sequential telescoping	Sequential telescoping	Zoomlion QY70V offers a higher operating efficiency.
Maximum lifting height(m)	Basic boom	12.2	11.6	Zoomlion QY70V's maximum lifting height has over whelmingly surpassed that of similar products in the industry.
	Boom	44.2	44.5	
	Boom + Fly-jib	60.2	59.5	
Winch mechanism	Single-rope speed (m/min)	135	130	The overall efficiency of Zoomlion QY70V's winch mechanism is higher than that of similar products in the industry
	Parts of line	12	12	
	Hook lifting speed (m/min)	11.25	10.83	The Zoomlion QY70V offers stinger rope wires
	Single-rope diameter (mm)	20	18	
Outrigger span (mm)		7600×6000	7300×6100	Zoomlion QY70V's outriggers offer greater transverse and longitudinal spans, making the whole vehicle more stable.

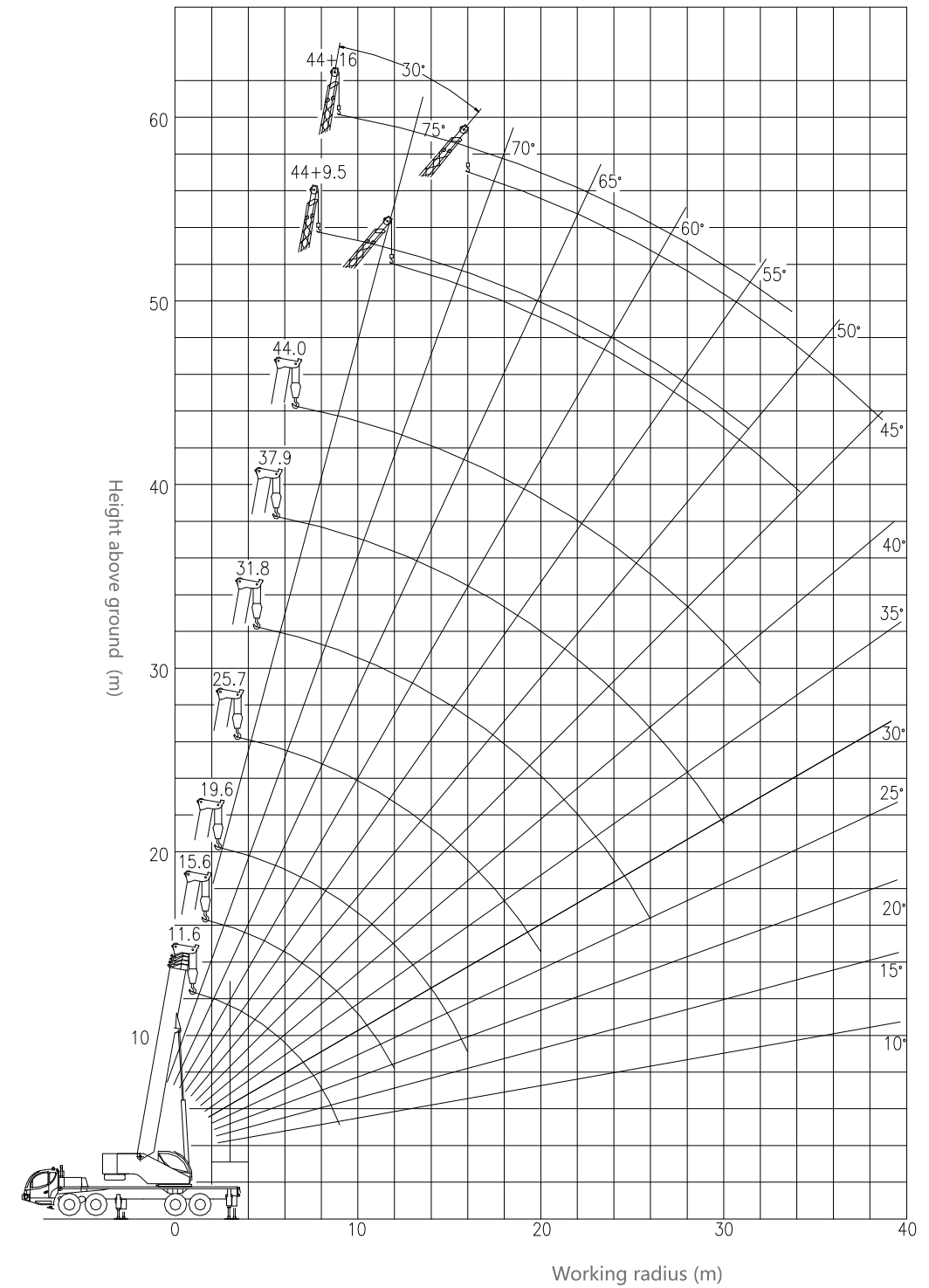
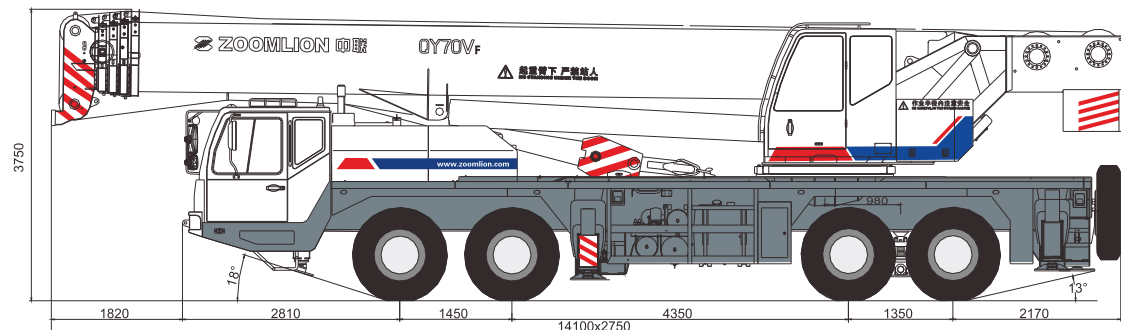


QY70V532 Main Technical Parameters

QY70V532 Lifting Height Curve

	Items	Values	Remarks
Working performance	Max. rated lifting capacity	kg	70000
	Max. load moment of basic boom	kN.m	2352
	Max. load moment of Max. length boom	kN.m	1098
	Max. lifting height of basic boom	m	12.2
	Max. lifting height of boom	m	44.2
Working speeds	Max. lifting height of jib	m	60.2
	Max. hoist rope speed (Main winch)	m/min	≥135
	Max. hoist rope speed (Auxiliary winch)	m/min	≥110
	Boom derricking up time	s	57
	Boom extending time	s	107
Driving parameters	Slewing speed	r/min	1.8
	Max. driving speed	km/h	75
	Max. gradeability	%	37
	Min. turning diameter	m	24
	Min. ground clearance	mm	280
Weights	Oil consumption per hundred kilometers	L	46
	Deadweight in driving condition	kg	45000
	Complete vehicle kerb mass	kg	44870
	Axle load (Front)	kg	19000
	Axle load (Rear)	kg	26000
Dimensions	Overall dimensions (L×W×H)	mm	14100×2750×3750
	Longitudinal distance between outriggers	m	6.00
	Transversal distance between outriggers	m	Fully extended 7.60 Half-extended 5.04
	Slewing radius	mm	4020
	Boom length	m	11.6~44.0
	Boom angle	°	-2 ~ 80
	Jib length	m	9.5、16
	Offset	°	0、30

QY70V532 Overall dimensions in driving condition (Unit: mm)



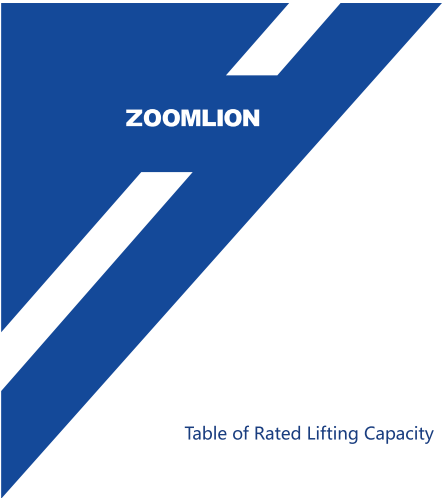


Table of Rated Lifting Capacity | QY70V532 / Table 1

Unit: kg

Working radius (m)	Boom(m)						
	Outriggers fully extended, over side and over rear Telescopic cylinder I fully extended						
	11.6	15.6	19.6	25.7	31.8	37.9	44.0
3.0	70000	50000	40000				
3.5	64000	50000	40000				
4.0	56000	48000	40000	28000			
4.5	52000	44000	40000	28000			
5.0	48000	43000	38500	27000			
5.5	43000	39000	36000	26000	18000		
6.0	39000	37000	34000	25000	18000		
6.5	35000	33000	31500	24000	18000		
7.0	30000	28700	28700	23000	18000	14100	
7.5	26500	25000	25000	22000	18000	14100	
8.0	23500	22500	22500	21000	17500	14100	
9.0	18200	18200	18200	18500	16000	14100	10000
10.0		14700	14700	15300	14500	13300	10000
11.0		12200	12200	12700	13000	12000	9500
12.0		10000	10200	11000	11500	11300	9200
14.0			7100	8200	8800	9300	8200
16.0			5300	6000	6700	7200	7300
18.0				4700	5200	5500	5900
20.0				3500	4000	4300	4600
22.0					3100	3450	3800
24.0					2300	2750	3050
26.0					1700	2100	2450
28.0						1600	1950
30.0						1200	1500
32.0							1200
I	0	4.0	8.0	8.0	8.0	8.0	8.0
II	0	0	0	6.1	12.2	18.3	24.4
Reeving	12	9	9	5	5	3	3
Hook	70 t main hook						

Unit: kg

QY70V532 / Table 2 | Table of Rated Lifting Capacity

Working radius (m)	Boom(m)										
	Outriggers fully extended, over side and over rear Telescopic cylinder I intermediately extended						Outriggers fully extended, over side and over rear Telescopic cylinder I fully retracted				
	11.6	15.6	21.7	27.8	33.9	40.0	11.6	17.7	23.8	29.9	36.0
3.0	70000	50000					70000	28000			
3.5	64000	50000	28000				64000	28000			
4.0	56000	48000	28000				56000	28000	17800		
4.5	52000	44000	28000				52000	28000	17600		
5.0	48000	43000	27000	18000			48000	27000	17400	14000	
5.5	43000	39000	26000	18000			43000	26000	17200	14000	
6.0	39000	37000	25000	18000			39000	25000	17000	14000	
6.5	35000	33000	24000	18000	14000		35000	24000	16800	14000	
7.0	30000	28700	23000	17500	14000		30000	23000	16500	14000	9000
7.5	26500	25000	22000	17000	14000		26500	22000	16000	14000	9000
8.0	23500	22500	21000	16500	14000	9500	23500	21000	15500	13000	9000
9.0	18200	18200	19100	16000	14000	9000	18200	19800	15000	12100	8800
10.0		14700	15600	14500	13000	8500		16300	14500	11300	8600
11.0		12200	13000	13800	12000	8000		13700	14000	10500	8300
12.0		10000	11000	11700	11000	7700		11700	12400	9700	8000
14.0			8200	8800	9300	7200			9400	8600	7500
16.0			6100	6700	7200	6800			7400	7600	6800
18.0				5200	5700	6000				6000	6000
20.0				4100	4500	4800				4900	5200
22.0				3200	3700	3900				4100	4300
24.0					2900	3200					3600
26.0					2300	2600					3000
28.0					1800	2100					2500
30.0						1600					
32.0						1300					
I	0	4.0	4.0	4.0	4.0	4.0	0	0	0	0	0
II	0	0	6.1	12.2	18.3	24.4	0	6.1	12.2	18.3	24.4
Reeving	12	9	5	5	3	3	12	5	5	3	3
Hook	70 t main hook										



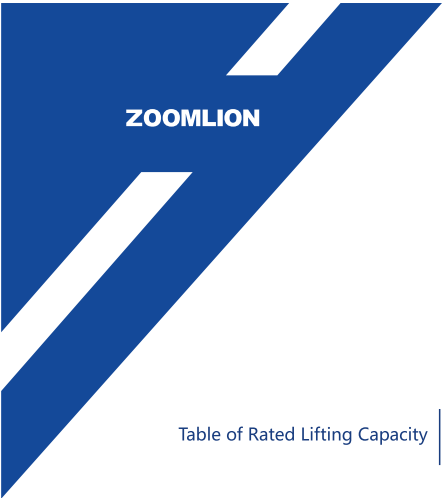


Table of Rated Lifting Capacity

QY70V532 / Table 3

UNIT kg

Working radius (m)	Boom (m)												
	Outriggers intermediately extended, over side and over rear Telescopic cylinder I fully extended							Outriggers intermediately extended, over side and over rear Telescopic cylinder I intermediately extended					
	11.6	15.6	19.6	25.7	31.8	37.9	44.0	11.6	15.6	21.7	27.8	33.9	40.0
3.0	60000	50000	40000					60000	50000				
3.5	50000	45000	40000					50000	45000	28000			
4.0	40000	40000	40000	28000				40000	40000	28000			
4.5	35000	35000	35000	28000				35000	35000	28000			
5.0	32800	32000	31500	27000				32800	32000	27000	18000		
5.5	26500	25700	25200	26000	18000			26500	25700	26000	18000		
6.0	21900	21200	20800	22200	18000			21900	21200	22900	18000		
6.5	18500	17800	17500	18800	18000			18500	17800	19400	17500	14000	
7.0	15800	15200	14900	16200	17000	14000		15800	15200	16700	17000	14000	
7.5	13700	13100	12800	14000	14800	14000		13700	13100	14600	15400	14000	
8.0	12000	11400	11100	12300	13000	13500		12000	11400	12800	13600	13500	9500
9.0	9300	8800	8500	9700	10400	10900	10000	9300	8800	10200	10800	11300	9000
10.0		6900	6600	7700	8400	8800	9200		6900	8200	8800	9300	8500
11.0		5400	5100	6200	6800	7200	7600		5400	6700	7300	7700	8100
12.0		4200	4000	5000	5600	6000	6400		4200	5500	6100	6500	6800
14.0			2300	3300	3900	4300	4600			3700	4300	4700	5000
16.0				2000	2600	3000	3300				3000	3400	3700
18.0					1700	2100	2300					2500	2800
20.0					1000	1400	1600					1800	2000
22.0						900	1100						1400
I	0	4.0	8.0	8.0	8.0	8.0	8.0	0	4.0	4.0	4.0	4.0	4.0
II	0	0	0	6.1	12.2	18.3	24.4	0	0	6.1	12.2	18.3	24.4
Reeving	12	9	9	5	5	3	3	12	9	5	5	3	3
Hook	70 t main hook												

UNIT kg

QY70V532 / Table 4

Table of Rated Lifting Capacity

Working radius (m)	Boom (m)				
	Outriggers intermediately extended, over side and over rear Telescopic cylinder I fully retracted				
	11.6	17.7	23.8	29.9	36.0
3.0	60000	28000			
3.5	50000	28000			
4.0	40000	28000	17800		
4.5	35000	28000	17600		
5.0	32800	27000	17400	14000	
5.5	26500	26000	17200	14000	
6.0	21900	23800	17000	14000	
6.5	18500	20200	16800	14000	
7.0	15800	17500	16500	14000	9000
7.5	13700	15300	16000	14000	9000
8.0	12000	13500	14200	13000	9000
9.0	9300	10800	11400	11800	8800
10.0		8800	9400	9800	8600
11.0		7200	7800	8200	8300
12.0		6000	6600	7000	7200
14.0			4800	5100	5300
16.0			3500	3800	4000
18.0				2900	3100
20.0				2200	2400
22.0				1600	1800
24.0					1300
I	0	0	0	0	0
II	0	6.1	12.2	18.3	24.4
Reeving	12	5	5	3	3
Hook	70 t main hook				

Boom angle (°)	Boom+Fly jib (m)			
	Support leg fully extended, sidewise and rearside operations			
	44.0 + 9.5		44.0 + 16.0	
	0°	30°	0°	30°
80°	5000	3000	3000	1300
78°	4700	2850	2700	1200
76°	4400	2600	2400	1150
74°	4100	2450	2100	1100
72°	3800	2300	1850	1050
70°	3500	2200	1700	1000
68°	3200	2100	1600	970
66°	2800	2000	1500	940
64°	2400	1900	1400	910
62°	2100	1800	1300	880
60°	1850	1650	1200	850
58°	1600	1350	1100	800
56°	1300	1150	1000	750
54°	1000	900	800	
52°	800			
Reeving	1			
Hook	5 t auxiliary hook			



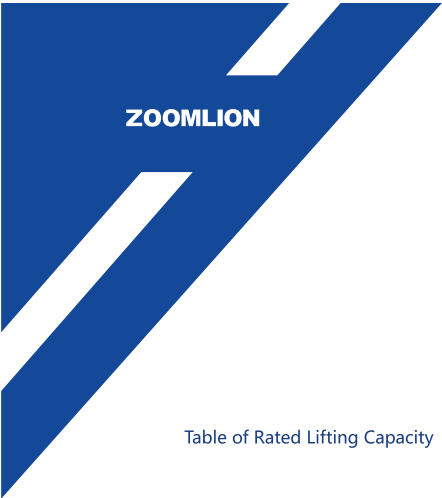


Table of Rated Lifting Capacity

QY70V532 / Table 5

UNIT kg

Working radius (m)	Boom (m)						
	Outriggers fully extended, over side and over rear, with 2 t movable counterweight Telescopic cylinder I fully extended						
	11.6	15.6	19.6	25.7	31.8	37.9	44.0
3.0	70000	50000	40000				
3.5	64000	50000	40000				
4.0	56000	48000	40000	28000			
4.5	52000	44000	40000	28000			
5.0	48000	43000	39000	27600			
5.5	43000	39000	36000	26000	18000		
6.0	39000	37000	34200	25500	18000		
6.5	35000	33000	31500	24000	18000		
7.0	30000	29500	29000	23500	18000	14000	
7.5	26500	25000	25000	22500	18000	14000	
8.0	24000	23400	23300	21500	17500	14000	
9.0	18900	18700	18500	19100	16000	14000	10000
10.0		15200	15100	16300	14500	13300	10000
11.0		12200	12200	13200	13000	12000	9600
12.0		10500	10400	11500	12200	11300	9400
14.0			7400	8500	9200	9600	8300
16.0			5300	6400	7100	7400	7500
18.0				4800	5500	6000	6100
20.0				3650	4300	4800	4900
22.0					3350	3800	3900
24.0					2650	3100	3250
26.0					2000	2400	2700
28.0						1900	2150
30.0						1450	1700
32.0							1350
I	0	4.0	8.0	8.0	8.0	8.0	8.0
II	0	0	0	6.1	12.2	18.3	24.4
Reeving	12	9	9	5	5	3	3
Hook	70 t main hook						

UNIT kg

QY70V532 / Table 6-7

Table of Rated Lifting Capacity

Working radius (m)	Boom (m)										
	Outriggers fully extended, over side and over rear, with 2 t movable counterweight Telescopic cylinder I intermediately extended						Outriggers fully extended, over side and over rear, with 2 t movable counterweight Telescopic cylinder I fully retracted				
	11.6	15.6	21.7	27.8	33.9	40.0	11.6	17.7	23.8	29.9	36.0
3.0	70000	50000					70000	28000			
3.5	64000	50000	28000				64000	28000			
4.0	56000	48000	28000				56000	28000	17800		
4.5	52000	44000	28000				52000	28000	17600		
5.0	48000	43000	27000	18000			48000	27000	17400	14000	
5.5	43000	39000	26000	18000			43000	26000	17200	14000	
6.0	39000	37000	25000	18000			39000	25000	17000	14000	
6.5	35000	33000	24000	18000	14000		35000	24000	16800	14000	
7.0	30000	29500	23000	17500	14000		30000	23000	16500	14000	9000
7.5	26500	25000	22000	17000	14000		26500	22000	16000	14000	9000
8.0	24000	23400	21000	16500	14000	9500	24000	21000	15500	13000	9000
9.0	18900	18700	19500	16000	14000	9000	18900	20000	15000	12100	8800
10.0		15200	16500	14500	13000	8500		17000	14500	11300	8600
11.0		12200	13300	13800	12000	8000		13800	14000	10500	8300
12.0		10500	11600	12300	11000	7700		12000	13000	9700	8000
14.0			8600	9300	9300	7300			10000	8600	7500
16.0			6500	7200	7600	6900			7900	7600	6800
18.0				5600	6200	6200				6500	6000
20.0				4400	5000	5000				5400	5200
22.0				3450	4000	4100				4400	4400
24.0					3300	3300					3700
26.0					2650	2800					3200
28.0					2100	2250					2650
30.0						1800					
32.0						1450					
I	0	4.0	4.0	4.0	4.0	4.0	0	0	0	0	0
II	0	0	6.1	12.2	18.3	24.4	0	6.1	12.2	18.3	24.4
Reeving	12	9	5	5	3	3	12	5	5	3	3
Hook	70 t main hook										



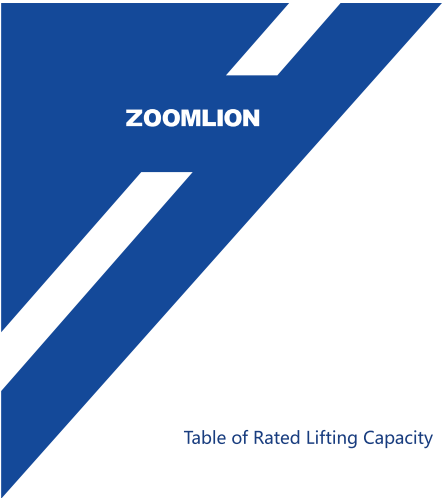


Table of Rated Lifting Capacity

QY70V532 / Table 8

UNIT kg

Working radius (m)	Boom (m)												
	Outriggers intermediately extended, over side and over rear, with 2 t movable counterweight Telescopic cylinder I fully extended							Outriggers intermediately extended, over side and over rear, with 2 t movable counterweight Telescopic cylinder I intermediately extended					
	11.6	15.6	19.6	25.7	31.8	37.9	44.0	11.6	15.6	21.7	27.8	33.9	40.0
3.0	60000	50000	40000					60000	50000				
3.5	50000	45000	40000					50000	45000	28000			
4.0	40000	40000	40000	28000				40000	40000	28000			
4.5	35000	35000	35000	28000				35000	35000	28000			
5.0	32800	32000	31500	27000				32800	32000	27000	18000		
5.5	26500	25700	25200	26000	18000			26500	25700	26000	18000		
6.0	21900	21200	20800	22200	18000			21900	21200	22900	18000		
6.5	18500	17800	17500	18800	18000			18500	17800	19400	17500	14000	
7.0	17000	15200	14900	16200	17000	14000		17000	15200	16700	17000	14000	
7.5	14000	13100	12800	14000	14800	14000		14000	13100	14600	15400	14000	
8.0	13000	12700	12300	13500	13000	13500		13000	12700	13800	13600	13500	9500
9.0	10000	9900	9700	10800	10400	12000	10000	10000	9900	11200	10800	12300	9000
10.0		7900	7600	8700	9500	9900	9200		7900	9200	9800	10000	8500
11.0		5900	5800	6800	7400	8000	7600		5900	7500	8100	8500	8100
12.0		5000	4800	5900	6500	7000	7300		5000	6300	6900	7300	7600
14.0			3000	4000	4700	5100	5400			4300	4900	5300	5600
16.0				2600	3400	3800	4100				3500	3900	4500
18.0					2400	2800	3100					3000	3300
20.0					1700	2100	2300					2200	2400
22.0						1500	1700						1800
I	0	4.0	8.0	8.0	8.0	8.0	8.0	0	4.0	4.0	4.0	4.0	4.0
II	0	0	0	6.1	12.2	18.3	24.4	0	0	6.1	12.2	18.3	24.4
Reeving	12	9	9	5	5	3	3	12	9	5	5	3	3
Hook	70 t main hook												

UNIT kg

QY70V532 / Table 9

Table of Rated Lifting Capacity

Working radius (m)	Boom (m)				
	Outriggers intermediately extended, over side and over rear, with 2 t movable counterweight Telescopic cylinder I fully retracted				
	11.6	17.7	23.8	29.9	36.0
3.0	60000	28000			
3.5	50000	28000			
4.0	40000	28000	17800		
4.5	35000	28000	17600		
5.0	32800	27000	17400	14000	
5.5	26500	26000	17200	14000	
6.0	21900	23800	17000	14000	
6.5	18500	20200	16800	14000	
7.0	17000	17500	16500	14000	9000
7.5	14000	15300	16000	14000	9000
8.0	13000	14500	14200	13000	9000
9.0	10000	11800	11400	12000	8800
10.0		9800	10400	10500	8600
11.0		8000	8800	8800	8300
12.0		6800	7400	7800	8000
14.0			5400	5700	5900
16.0			4000	4300	4500
18.0				3400	3600
20.0				2600	2800
22.0				2000	2200
24.0					1700
I	0	0	0	0	0
II	0	6.1	12.2	18.3	24.4
Reeving	12	5	5	3	3
Hook	70 t main hook				

Pictures and technical specifications in sample books may not accord with the delivery goods because of the improvement in design.
Please understand and make allowance of our problems without notice..

